

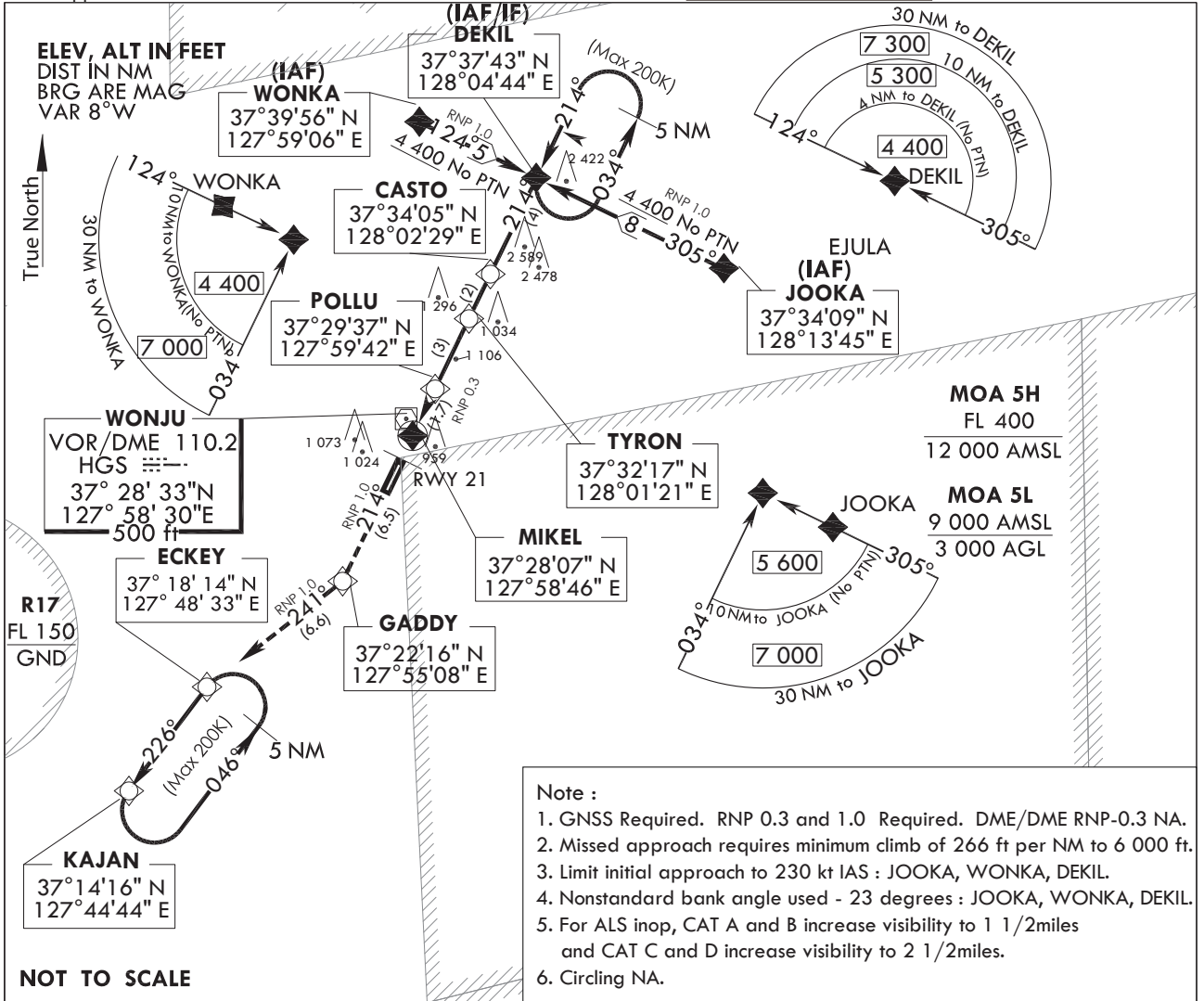
**INSTRUMENT
APPROACH
CHART**

Note : Approach under U.S TERPS.

AERODROME ELEV 330 ft
HEIGHTS RELATED TO
THR RWY 21 - ELEV 330 ft

WONJU APP	130.2
	234.4 255.0
WONJU TWR	126.2 118.325
	236.6 265.5

WONJU/wonju (RKNW)
RNAV(GNSS)
RWY 21



- Note :**
- GNSS Required. RNP 0.3 and 1.0 Required. DME/DME RNP-0.3 NA.
 - Missed approach requires minimum climb of 266 ft per NM to 6 000 ft.
 - Limit initial approach to 230 kt IAS : JOOKA, WONKA, DEKIL.
 - Nonstandard bank angle used - 23 degrees : JOOKA, WONKA, DEKIL.
 - For ALS inop, CAT A and B increase visibility to 1 1/2 miles and CAT C and D increase visibility to 2 1/2 miles.
 - Circling NA.

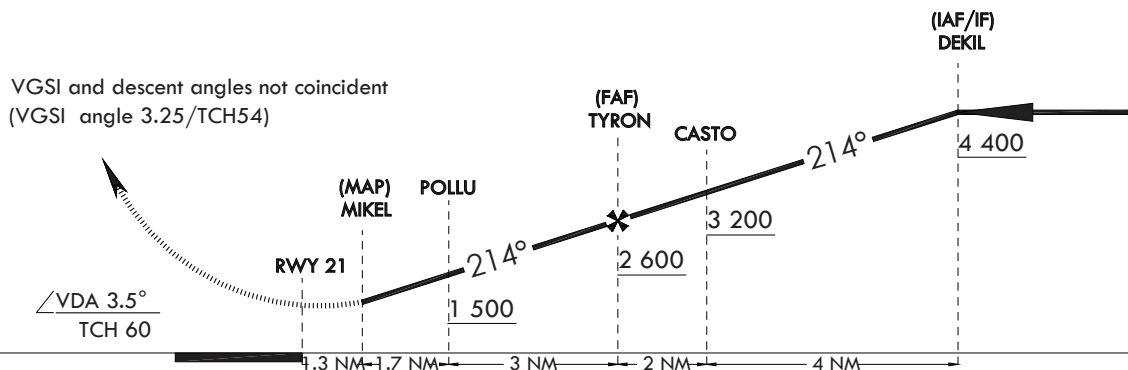
NOT TO SCALE

※ VGSI : Visual Glide Slope Indicator
VPA : Vertical Path Angle
TCH : Threshold Crossing Height
No PTN : No Procedure Turn Required

TRANSITION ALT 14 000
TRANSITION LVL FL 140

MISSED APPROACH

Climb to 6 000 ft on track 214° to GADDDY, then track 241° to ECKEY, then track 226° to KAJAN and hold.



CATEGORY	A	B	C	D
LNNAV/VNAV DA		NA		
LNNAV MDA	1 200/60 870(900-11/8)	1 200-2 870(900-2)		
CIRCLING	NA			

Change : Information of APP frequency.

WONJU/wonju (RKNW)
RNAV(GNSS)
RWY 21

AERONAUTICAL DATA TABULATION

INSTRUMENT APPROACH PROCEDURE CODING TABLES

RNAV(GNSS) RWY 21

Serial Number	Path Descriptor	Waypoint Identifier	Fly -Over	Course/Track ° M(° T)	Distance (NM)	Turn Direction	Altitude (ft)	Speed (kt)	Coordinates	VPA /TCH	Navigation specification	Remarks
001	-	JOOKA	-	-	-	-	+5 600	-230	373408.84 N 1281345.27 E	-	RNPAPCH	IAF
002	TF	DEKIL	-	305(296.5)	8.0	-	+4 400	-230	373742.86 N 1280444.26 E	-	RNPAPCH	IAF/IF

RNAV(GNSS) RWY 21

Serial Number	Path Descriptor	Waypoint Identifier	Fly -Over	Course/Track ° M(° T)	Distance (NM)	Turn Direction	Altitude (ft)	Speed (kt)	Coordinates	VPA /TCH	Navigation specification	Remarks
001	-	WONKA	-	-	-	-	+4 400	-230	373956.27 N 1275905.69 E	-	RNPAPCH	IAF
002	TF	DEKIL	-	124(116.3)	5.0	-	+4 400	-230	373742.86 N 1280444.26 E	-	RNPAPCH	IAF/IF
003	TF	CASTO	-	214(206.4)	4.0	-	+3 200	-230	373405.59 N 1280228.87 E	-	RNPAPCH	-
004	TF	TYRON	-	214(206.4)	2.0	-	+2 600	-	373216.91 N 1280121.18 E	-	RNPAPCH	FAF
005	TF	POLLU	-	214(206.4)	3.0	-	+1 500	-	372937.54 N 1275942.09 E	-	RNPAPCH	-
006	TF	MIKEL	FO	214(206.4)	1.7	-	1 200	-	372806.75 N 1275845.69 E	-	RNPAPCH	MAP

MISSED Approach

Serial Number	Path Descriptor	Waypoint Identifier	Fly -Over	Course/Track ° M(° T)	Distance (NM)	Turn Direction	Altitude (ft)	Speed (kt)	Coordinates	VPA /TCH	Navigation specification	Remarks
001	TF	MIKEL	-	-	-	-	-	-	372806.75 N 1275845.69 E	-	RNPAPCH	MAP
002	TF	GADDY	-	214(206.3)	6.5	-	-	-	372216.20 N 1275508.33 E	-	RNPAPCH	CG 266 ft/NM TO 6 000 ft
003	TF	ECKEY	-	241(232.6)	6.6	-	-	-	371814.41 N 1274832.66 E	-	RNPAPCH	CG 266 ft/NM TO 6 000 ft
004	TF	KAJAN	-	226(217.6)	5.0	-	6 000	-	371416.30 N 1274443.60 E	-	RNPAPCH	-

HOLDING Data

Serial Number	Path Descriptor	Waypoint Identifier	Fly -Over	Course/Track ° M(° T)	Distance (NM)	Turn Direction	Altitude (ft)	Speed (kt)	Coordinates	VPA /TCH	Navigation specification	Remarks
001	TF	DEKIL	-	214(206.4)	5.0	L	4 400	-200	373408.84 N 1281345.27 E	-	RNPAPCH	Hold at DEKIL NE left Turn 214° Inbound 5 NM Leg
002	TF	KAJAN	-	226(217.6)	5.0	L	6 000	-200	373742.86 N 1280444.26 E	-	RNPAPCH	Hold at KAJAN NE Left Turn 226° Inbound 5 NM Leg.

**INSTRUMENT
APPROACH
CHART**

AERODROME ELEV 330 ft
HEIGHTS RELATED TO
THR RWY 03 - ELEV 325 ft

WONJU APP	130.2
	234.4 255.0
WONJU TWR	126.2 118.325
	236.6 265.5

WONJU/wonju (RKNW)
RNAV(GNSS)
RWY 03

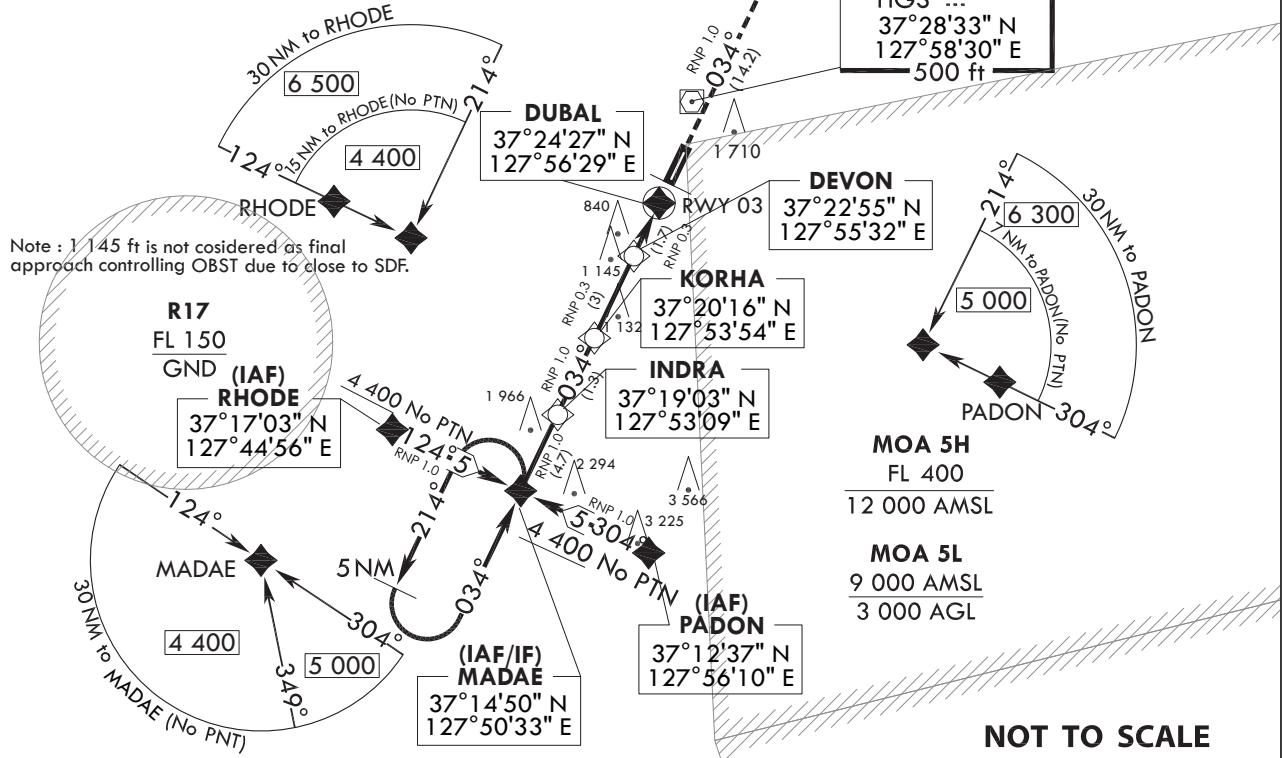
Note : Approach under U.S.TERPS.

ELEV, ALT IN FEET
DIST IN NM
BRG ARE MAG
VAR 8°W

Note :

- GNSS Required. RNP 0.3 and 1.0 Required. DME/DME RNP-0.3 NA.
- Missed approach requires minimum climb of 355 ft per NM to 6 000 ft.
- Limit initial approach to max 220 kt IAS.
- Bank angle used - 23 degrees : RHODE, MADAE, PADON.
- For ALS inop, CAT A and B increase visibility to 1 1/2 miles and CAT C and D increase visibility to 2 1/2 miles.
- Circling NA.
- When VGSI inop, procedure NA at night.
- JUNGWON TMA 2.0 NM South of PADON Avoid surface to FL 175.

True North ↑



Note : 1 145 ft is not considered as final approach controlling OBST due to close to SDF.

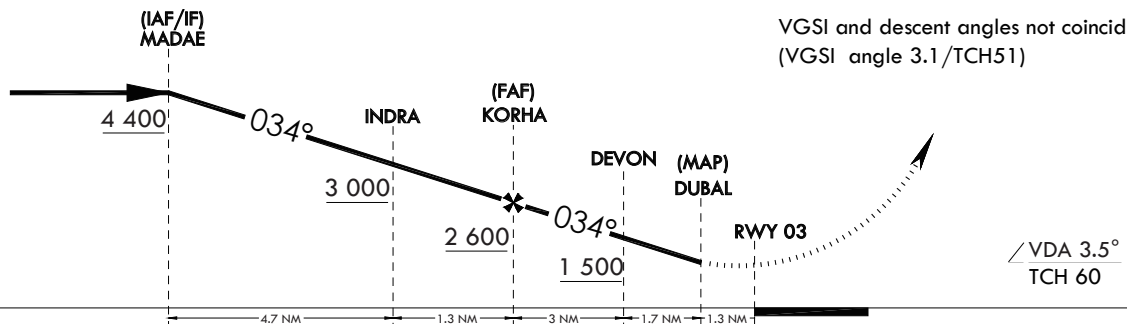
NOT TO SCALE

※ VGSI : Visual Glide Slope Indicator
VPA : Vertical Path Angle
TCH : Threshold Crossing Height
No PTN : No Procedure Turn Required

TRANSITION ALT 14 000
TRANSITION LVL FL 140

MISSED APPROACH

Climb to 6 000 ft on track 034° to GAREP and HOLD.



VGSI and descent angles not coincident
(VGSI angle 3.1/TCH51)

CATEGORY	A	B	C	D
LNAV/VNAV DA			NA	
LNAV MDA	1 160/60 835(900-11/8)		1 160-17/8 835(900-17/8)	
CIRCLING			NA	

Change : Information of APP frequency.

WONJU/wonju (RKNW)
RNAV(GNSS)
RWY 03

AERONAUTICAL DATA TABULATION

INSTRUMENT APPROACH PROCEDURE CODING TABLES

RNAV(GNSS) RWY 03

Serial Number	Path Descriptor	Waypoint Identifier	Fly -Over	Course/Track ° M(° T)	Distance (NM)	Turn Direction	Altitude (ft)	Speed (kt)	Coordinates	VPA /TCH	Navigation specification	Remarks
001	-	RHODE	-	-	-	-	+4 400	-220	371703.21 N 1274455.61 E	-	RNPAPCH	IAF
002	TF	MADAE	-	124(116.2)	5.0	-	+4 400	-220	371450.45 N 1275032.84 E	-	RNPAPCH	IAF/IF

RNAV(GNSS) RWY 03

Serial Number	Path Descriptor	Waypoint Identifier	Fly -Over	Course/Track ° M(° T)	Distance (NM)	Turn Direction	Altitude (ft)	Speed (kt)	Coordinates	VPA /TCH	Navigation specification	Remarks
001	-	PADON	-	-	-	-	+5 000	-220	371237.42 N 1275609.75 E	-	RNPAPCH	IAF
002	TF	MADAE	-	304(296.3)	5.0	-	+4 400	-220	371450.45 N 1275032.84 E	-	RNPAPCH	IAF/IF
003	TF	INDRA	-	034(026.3)	4.7	-	+3 000	-220	371903.51 N 1275309.14 E	-	RNPAPCH	-
004	TF	KORHA	-	034(026.3)	1.3	-	+2 600	-	372015.88 N 1275353.87 E	-	RNPAPCH	FAF
005	TF	DEVON	-	034(026.3)	3.0	-	+1 500	-	372255.32 N 1275532.56 E	-	RNPAPCH	-
006	TF	DUBAL	FO	034(026.3)	1.7	-	1 160	-	372426.96 N 1275629.33 E	-	RNPAPCH	MAP

MISSED Approach

Serial Number	Path Descriptor	Waypoint Identifier	Fly -Over	Course/Track ° M(° T)	Distance (NM)	Turn Direction	Altitude (ft)	Speed (kt)	Coordinates	VPA /TCH	Navigation specification	Remarks
001	-	DUBAL	-	-	-	-	-	-	372426.96 N 1275629.33 E	-	RNPAPCH	MAP
002	TF	GAREP	-	034(026.3)	14.2	-	+6 000	-	373710.88 N 1280424.31 E	-	RNPAPCH	CG 355 ft/NM TO 6 000 ft

HOLDING Data

Serial Number	Path Descriptor	Waypoint Identifier	Fly -Over	Course/Track ° M(° T)	Distance (NM)	Turn Direction	Altitude (ft)	Speed (kt)	Coordinates	VPA /TCH	Navigation specification	Remarks
001	TF	MADAE	-	034(026.3)	5.0	L	4 400	-200	371450.45 N 1275032.84 E	-	RNPAPCH	Hold at MADAE SW left Turn 034° Inbound 5 NM Leg
002	TF	GAREP	-	034(026.3)	5.0	L	6 000	-200	373710.88 N 1280424.31 E	-	RNPAPCH	Hold at GAREP NE Left Turn 214° Inbound 5 NM Leg.

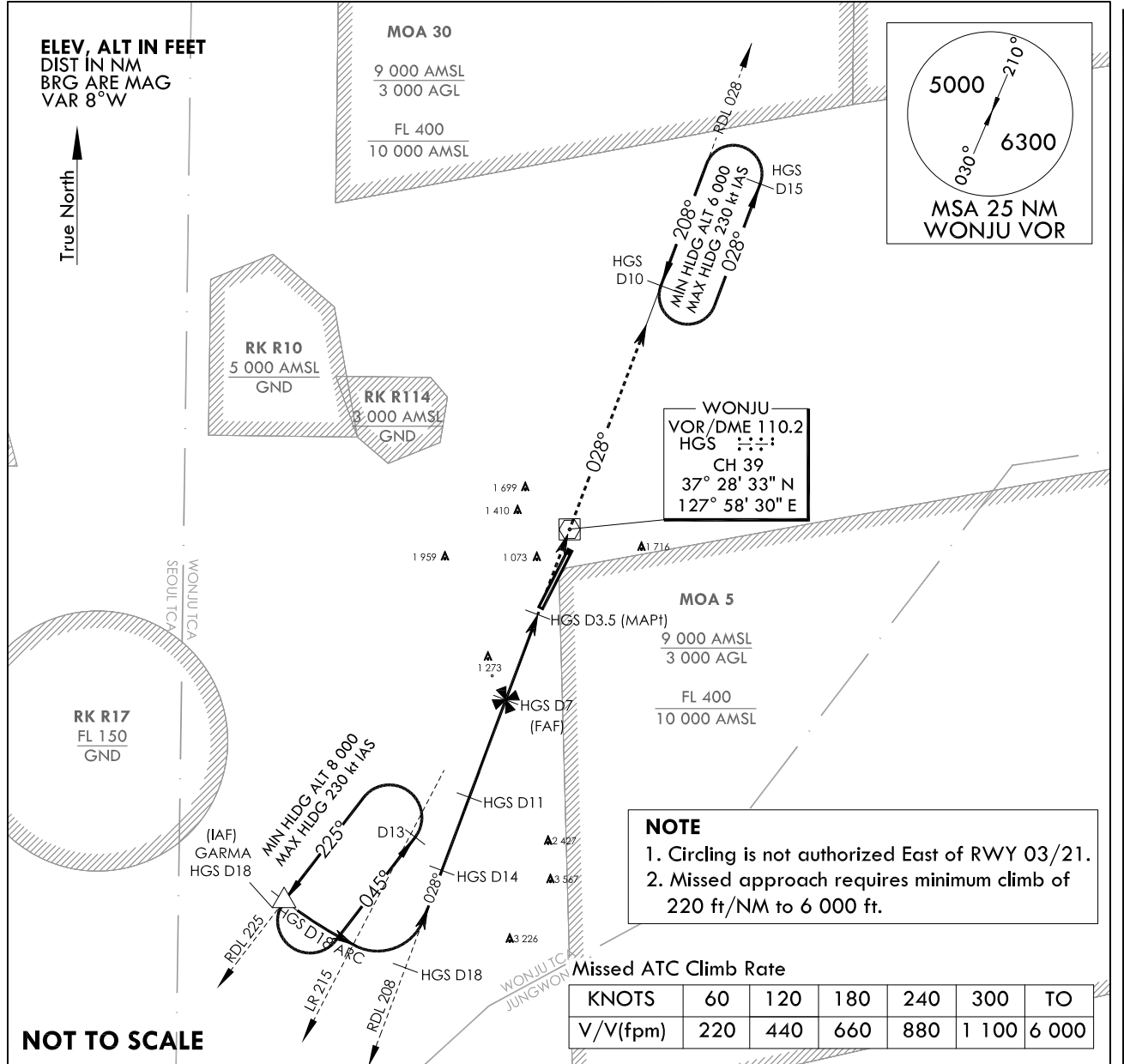
**INSTRUMENT
APPROACH
CHART**

AERODROME ELEV 330 ft
HEIGHTS ELEV TDZ 325 ft

WONJU APP	130.2	234.4	255.0
WONJU TWR	265.5	118.325	236.6
	236.6	126.2	

**WONJU/Wonju (RKNW)
VOR/DME A**

Note : Approach and circle to land under U.S. TERPS.



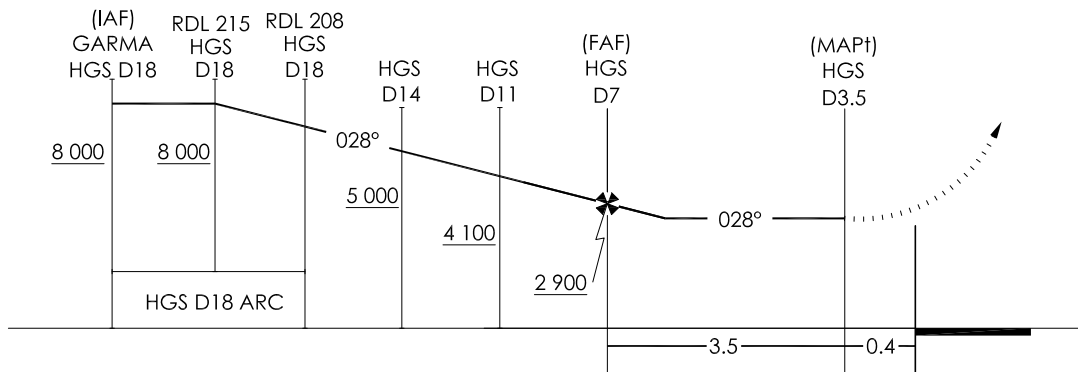
KNOTS	60	120	180	240	300	TO
V/V(fpm)	220	440	660	880	1 100	6 000

NOT TO SCALE

TRANSITION ALT 14 000
TRANSITION LVL FL 140

MISSED APPROACH

Climb to 6 000 ft via HDG 028° to HGS VOR/DME and RDL 028 HGS to HGS 10DME and hold, continue climb-in-hold to 6 000 ft.



* EXPANDED CIRCLING APPROACH MANEUVERING AIRSPACE RADIUS

Change : Information of procedure.

INTENTIONALLY

LEFT

BLANK